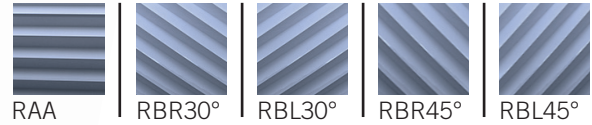


NEW

FORM KNURLING TOOL F701



KNURLING PROFILE ON WORKPIECE (DIN 82):

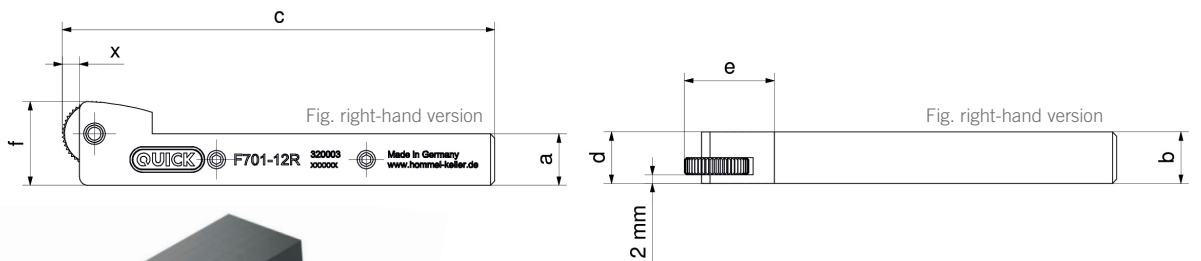


SELECTION OF KNURLING WHEELS (DIN 403):

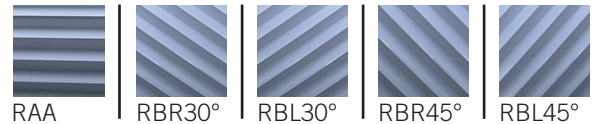


PRODUCT FEATURES	Item no. (right-hand version)	Item no. (left-hand version)	Model	Workpiece Ø [mm]	Knurling wheel (Ø x w x b) [mm]	Dimensions [mm]						
	a	b				c	d	e	f	x		
<ul style="list-style-type: none"> • small, stable and compact for fast, single-wheel use • firmly defined center height • adjustment of the axis parallelism possible 	32000398 <input checked="" type="checkbox"/>	32000406	F701-10	2.5/10-30/50	10/15 x 4 x 4	10	10	101	12	21	18.5	1.5/4
	32000402 <input checked="" type="checkbox"/>	32000407	F701-12	2.5/10-30/50	10/15 x 4 x 4	12	12	101	12	21	19.5	1.5/4
	32000403 <input checked="" type="checkbox"/>	32000408	F701-16	2.5/10-30/50	10/15 x 4 x 4	16	16	101	16	21	23.5	1.5/4

Available from stock



KNURLING PROFILE ON WORKPIECE (DIN 82):

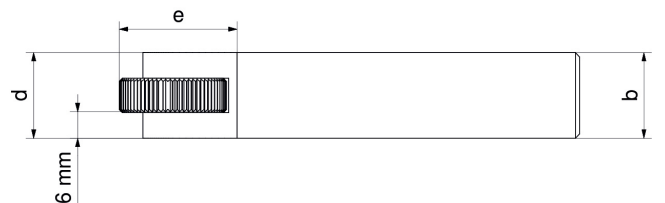


SELECTION OF KNURLING WHEELS (DIN 403):



PRODUCT FEATURES	Item no.	Model	Workpiece Ø [mm]	Knurling wheel (Ø x w x b) [mm]	Dimensions [mm]						
	a				b	c	d	e	f	x	
<ul style="list-style-type: none"> • stable and compact for fast, single-wheel use • firmly defined center height • adjustment of the axis parallelism possible 	32000399 <input checked="" type="checkbox"/>	F701-20U	8 - 200	20/25 x 8 x 6	20	20	107.5	20	27.5	32.5	3/5.5
	32000404 <input checked="" type="checkbox"/>	F701-25U	8 - 200	20/25 x 8 x 6	25	20	107.5	20	27.5	37.5	3/5.5

Available from stock



SPARE PARTS F701

PIN F701

Item no.	Knurling wheel (Ø x w x b) [mm]	Shank dimensions [mm]
06TER1015	10/15 x 4 x 4	10 x 12 / 12 x 12
06TER1036	10/15 x 4 x 4	16 x 16
06TER1018	20/25 x 8 x 6	20 x 20 / 25 x 20

